

ID	CURRENT OWNER	CURRENT OCCUPANT	FORMER OCCUPANT	SBL	SQFT OF BUILDING	ACRES	YEAR COMPLETED
1	BENJAMIN MOORE & CO	BENJAMIN MOORE & CO		174.14-1-6/8/10	127,000	75.57	1989
2	IDA	PIONEER WINDOW		174.18-1-20	165,600	8.66	2000
3	CENTURY LINEN	CENTURY LINEN	(MARCK) (LUMEX) (DOANE)	174.18-1-10/174.18-1-1	42,000	3.09	1990
4	EUPHRATES	EUPHRATES		174.17-1-2	40,625	4.3	2000
5	FAGE	FAGE	ELECTRICAL SUBSTATION	174.17-1-7.2		2.01	2007
6	JOHNSTOWN RENEWABLES	JOHNSTOWN RENEWABLES	N/A	174.18-1-17.1	INCOMPLETE	5.23	2017
7	EUPHRATES	EUPHRATES	CATALYST INTERNATIONAL/C&E PROCESSING	174.18-1-18	36,500	4.49	1998
8	LANGHALS ENTERPRISES LLC	YUSEN	FINKLE/OZARK ELECTRONICS	174.18-1-15	113,400	7.95	1995
9	STAG II ALBANY LLC	UNOCCUPIED	(KRAMER) (VOPAK)	174.18-1-11	59,200	5.46	1991
10	STAG II ALBANY LLC	UNOCCUPIED		174.18-1-13	52,000	8.08	1994
11	WALMART FOOD DISTRIBUTION	WALMART FOOD DISTRIBUTION		*See Map	868,000	146	2000
12	STAG II ALBANY LLC	ELECTROMETRICS		174.17-1-5	40,400	7.88	1995
13	FAGE	FAGE	CORE-MARK/FINKLE/H&J LEATHER	185.5-1-1.5	35,000	10.16	2001
14	WALMART REAL ESTATE TRUST	DHL LOGISTICS		174.18-1-16	207,250	29.85	1995
15	131 ENTERPRISE DR LLC	FRASIER ENTERPRISES	COAST	174.18-1-12	4,500	0.98	1991
16	FAGE	FAGE		174.17-1-7.2	365,000	22.53	2007

ID	STATUS	SBL	LOT#	ACRES
A	VACANT LOT	185.6-1-2	LOT 20	20
B	VACANT LOT	185.6-1-1	LOT 21	3.8
C	VACANT LOT	174.18-1-19	LOT 22	6.4

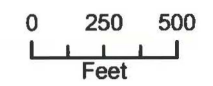
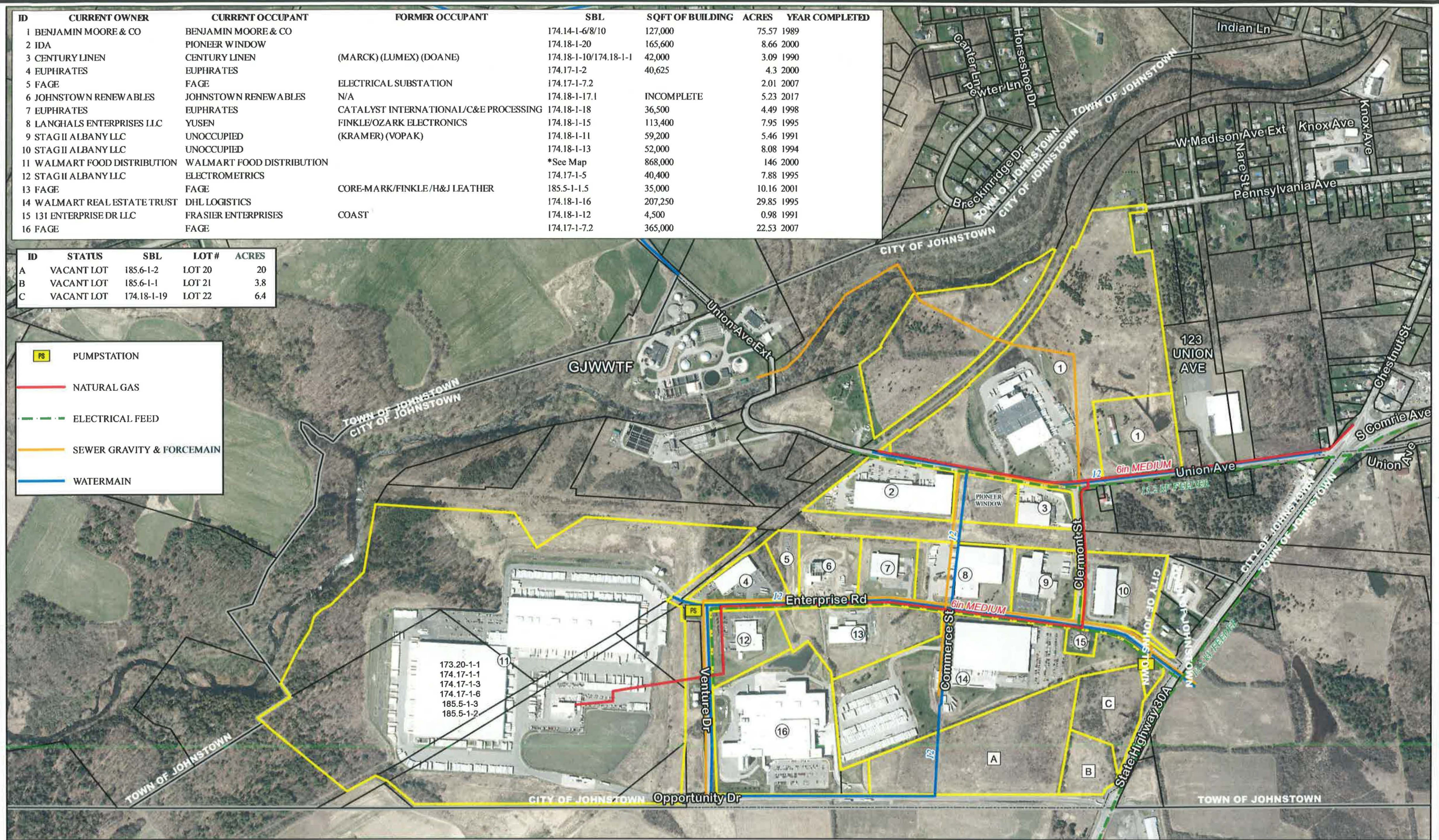
PS PUMPSTATION

— NATURAL GAS

— ELECTRICAL FEED

— SEWER GRAVITY & FORCEMAIN

— WATERMAIN



ZONE = INDUSTRIAL

JOHNSTOWN INDUSTRIAL PARK OCCUPANCY MAP 2020



County of Fulton
SCOTT D. HENGE, DIRECTOR
Location, distance and acreages of all features on this map are approximate and are not based upon an actual survey conducted by a Licensed L and Surveyor.
1.1.2020