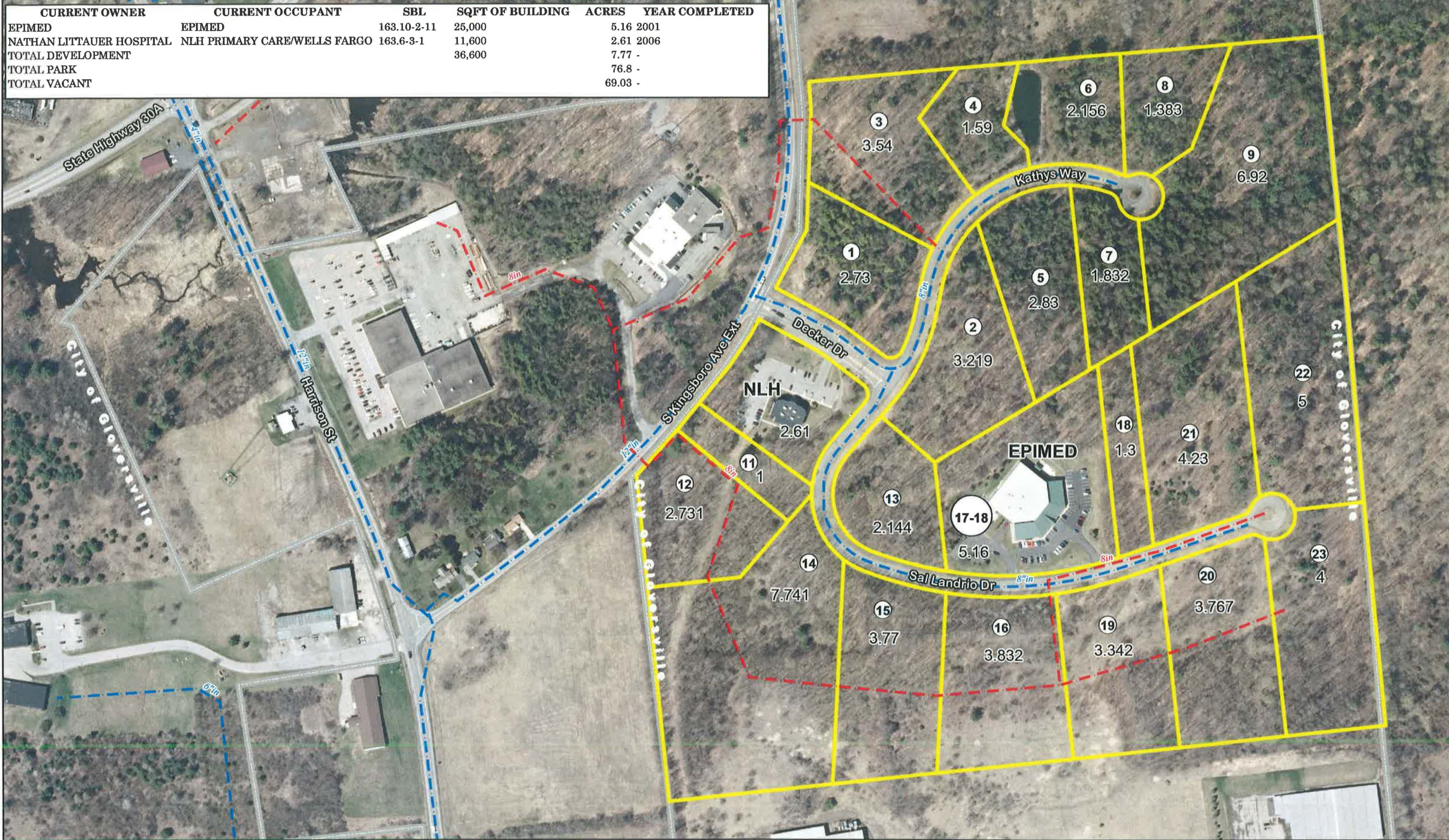





CURRENT OWNER	CURRENT OCCUPANT	SBL	SQFT OF BUILDING	ACRES	YEAR COMPLETED
EPIMED	EPIMED	163.10-2-11	25,000	5.16	2001
NATHAN LITTAUER HOSPITAL	NLH PRIMARY CARE/WELLS FARGO	163.6-3-1	11,600	2.61	2006
TOTAL DEVELOPMENT			36,600	7.77	-
TOTAL PARK				76.8	-
TOTAL VACANT				69.03	-



## CROSSROADS BUSINESS PARK OCCUPANCY MAP 2020

 NORTH  
 SEWER LINE  
 WATER LINE



County of Fulton  
 SCOTT D. HENZE, DIRECTOR  
 Locations, distances and acreages of all features on this map  
 are approximate and are not based upon an actual survey  
 conducted by a Licensed Land Surveyor.  
 1.1.2020